

CPX80I CPE DATASHEET

CPX80I

5G Industrial Outdoor CPE



CAT20

5GNR/LTE/WCDMA

RS485/RS232

IP67

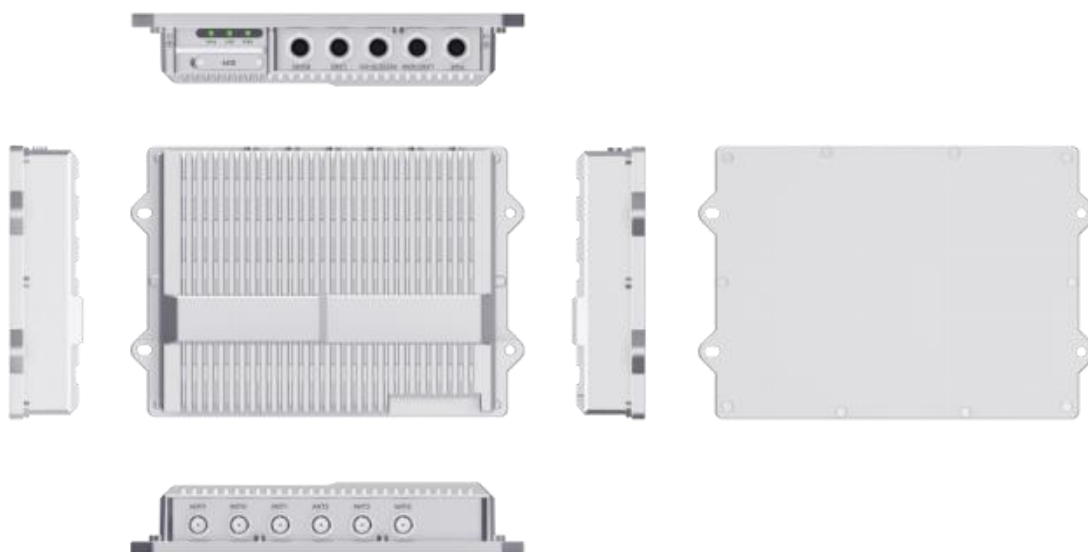
The CPX80I from SUNWAVE is a 5G Industrial Outdoor CPE. It supports various 4G/5G spectrums and ultra-high speed in a ruggedized form factor. This product offers industrial-grade environmental qualifications while providing high speed data services for the bandwidth-intensive applications. Up to IP67 with water-proof, shock-resistant, and lightning-proof, combined to ensure the quality of wireless communication under different outdoor environments.

CPX80I CPE DATASHEET

KEY FEATURES

- Qualcomm SDX62 chipset solution
- Supports BOTH SA and NSA
- Global/CBRS bands supported
- Ruggedized and anti-vibration design
- Powerful software features, supporting all router features
- Supports Wi-Fi 6
- Web, TR069 and SNMP based device management
- Supports 2.5G WAN/LAN & 1G LAN and diverse industry interfaces
- IP67 rating for outdoor environment

SYSTEM ELEMENTS



HARDWARE SPECIFICATIONS

3GPP	3GPP Rel-16	
Module	Quectel RM520N-GL	
Cellular Bands	5G NR	n1/n2/n3/n5/n7/n8/n12/n13/n14/n18/n20/n25/n26/n28/n29/n30/n38/n40/n41/n48/ n66/n70/n71/n75/n76/n77/n78/n79
	LTE	<u>LTE-FDD</u> : B1/B2/B3/B4/B5/B7/B8/B12/B13/B14/B17/B18/B19/B20/B25/B26/B28/B29/B30/B32/B66/B71 <u>LTE-TDD</u> : B34/B38/B39/B40/B41/B42/B43/B46(LAA)/B48
	WCDMA	B1/B2/B4/B5/B8/B19

Copyright © 2024 SUNWAVE All rights reserved.

CPX80I CPE DATASHEET

GNSS	GPS/GLONASS/BeiDou/Galileo
WiFi	Support 2.4GHz/5GHz dual band and IEEE802.11 b/g/n/ac/ax Wi-Fi
Network Mode	Supports SA/NSA
External Port	1 x M12 for power supply 1 x M12 for 10/100/1000Mbps compatible GE port 1 x M12 for 2.5GHz GE port 1 x M12 for RS232 + 2 x DI + 2 x DO 1 x M12 for RS485 2 x Nano SIM Slot (4FF, Dual SIM Single Active)
Antenna Port	4 x TNC connector for NR<E&GNSS antenna 2 x TNC connector for 2.4&5GHz Wi-Fi antenna
LED Indicators	1 x Power indicator 1 x Network status indicator 1 x RSSI indicator
Button	1 x reboot or restore button
MIMO	UL 2x2 MIMO on n38/n41/n48/n77/n78/n79 DL 4x4 MIMO on n1/n2/n3/n7/n25/n30/n38/n40/n41/n48/n66/n70/n77/n78/n79 and B1/B2/B3/B4/B7/B25/B30/B38/B40/B41/B42/B43/B48/B66 Wi-Fi 2x2 MIMO
Carrier Aggregation	LTE: DL 5CA and UL 2CA NR: 2CA
ENDC	Support
Power Supply	DC 12~36V
Power Consumption	< 24W
Dimensions	259 x 178 x 48 mm
Weight	≈2KG 4.41 lbs
Humidity	Operation/Storage: 5% - 95% (non-condensing)
Temperature	Operating temperature: -40 °C ~ +70 °C -40 °F ~ +158 °F Storage temperature: -40 °C ~ +85 °C -40 °F ~ +185 °F

SOFTWARE SPECIFICATIONS

Data Services	4 x APNs
	Multiple PDN
	IPV4/IPV6 compliance
LAN	IEEE 802.1Q VLAN
	DHCP V4/V6
	DNS and DNS proxy
	DMZ
	UPNP

CPX80I CPE DATASHEET

Management	ALG	
	ARP/ICMP/IGMP	
	MAC address filtering	
	Version management: Image checksum	
	HTTP/FTP auto-upgrade	
	TR069	Upload/ Download the ACS specified file
		Download the configuration file
		Configure & queries parameters
		Remote upgrade
		Remote debugging operations
		Cycle monitor
	SNMP	
	WebGUI/ CLI	Various level of user login priority with different limitation and display
		Encryption backup current settings and restore the backup settings
		Export current diagnosis results and operation logs
		Statistics of LAN link status, transmit and receive traffic and up time
	Diagnostics	
	USIM PIN management and card authentication	
	USIM activation	
	NAT/Bridge mode	
	Port mirror/Port forwarding	
VPN & Routing	Static Routing	
	IPSec	
	PPTP	
	GRE tunnel	
	L2TP V2/V3	
Security	Firewall	
	Mac address filtering	
	IP address filtering	
	URL filtering	
	Access control	
	HTTPS login from WAN	
	DDOS attack protection	
	Hierarchical user management	

COMPLIANCE SPECIFICATIONS

Environment Compliance	Protection rating: EN60529:IP67
------------------------	---------------------------------

CPX80I CPE DATASHEET

	Salt mist: IEC68-2-11,72H
	Shock: IEC60068-2-27/EN50155/EN61373
	Free Fall: IEC60068-2-32 (1 meter height with package)
	Vibration: IEC60068-2-6/EN50155/EN61373

Contact Us Today
en.sunwave.com